

JSC Board & Batten

Board and Batten Weatherboard Cladding

45mm Cavity on Flexible Underlay

Version 1.3 | 24/02/2025



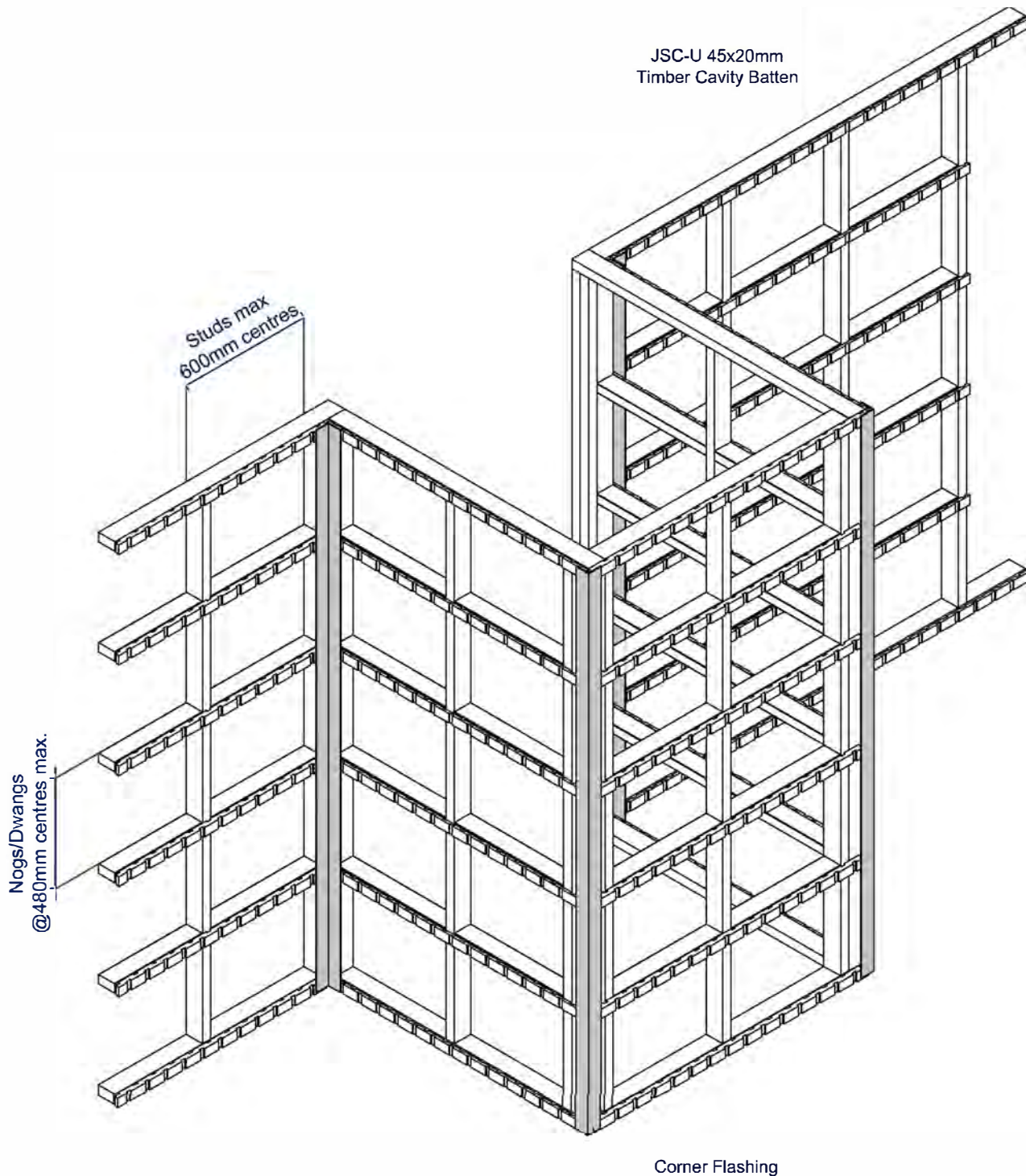
PREMIUM ARCHITECTURAL
& BUILDING SOLUTIONS

Index

Cavity Setout Guide Fixed Horizontally

| | |
|---------------|---------------------------------------|
| JVB-F45-SEC01 | Sectional Detail – Plan View |
| JVB-F45-SEC02 | Sectional Detail – Cross Section View |
| JVB-F45-01 | Bottom Plate Detail |
| JVB-F45-01A | Bottom Plate on Timber Detail |
| JVB-F45-02 | Top Plate Soffit Detail |
| JVB-F45-03 | Raking Soffit Detail |
| JVB-F45-04 | Bottom Plate Soffit Detail |
| JVB-F45-05 | Inter Storey Junction Detail |
| JVB-F45-06 | Parapet Detail |
| JVB-F45-10 | Internal Corner Detail |
| JVB-F45-12 | External Corner Box Detail |
| JVB-F45-20 | Scarf Detail |
| JVB-F45-21 | Pipe Penetration Detail |
| JVB-F45-25 | Meterbox Head Detail |
| JVB-F45-26 | Meterbox Jamb Detail |
| JVB-F45-27 | Meterbox Sill Detail |
| JVB-F45-30 | Window Head Detail |
| JVB-F45-31 | Window Jamb Detail |
| JVB-F45-32 | Window Sill Detail |

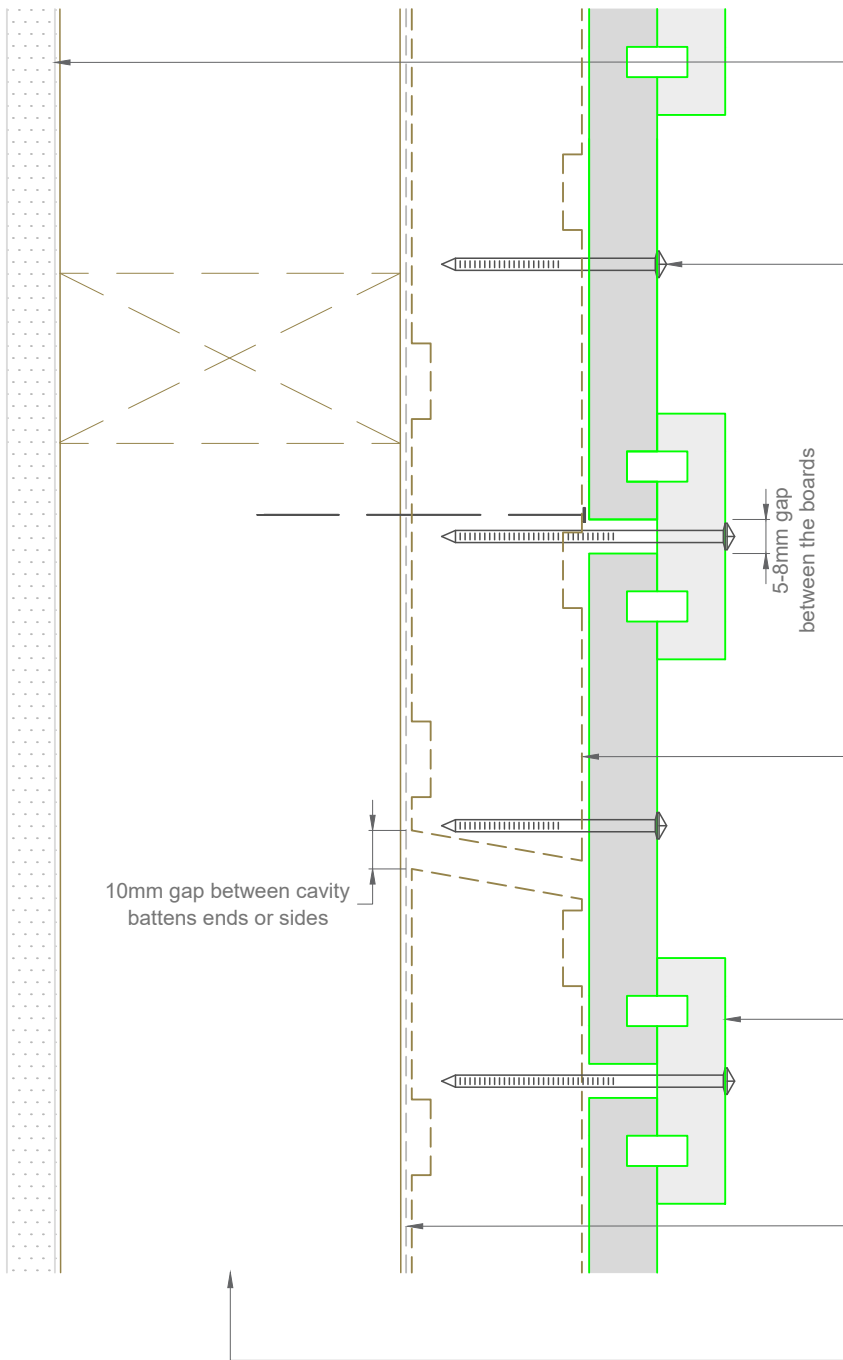
20mm Cavity Batten Setout fixed Horizontally



Note: This setout guide is for fixing JSC-U 45x20 mm Cavity Battens for Vertical weatherboard cladding

Plan View

CodeMark >>>
CMNZ30083



Interior lining or use rigid wall underlay for unlined walls such as gable ends. See NZBC/E2 paragraph 9.1.4

Single fix at each nog with annular grooved stainless steel or silicon bronze nails as per NZBC/E2 Table 24

- Pre-drilled 1mm diameter smaller than nail gauge
- Nailed with a 2° upward slope
- 35mm min penetration into battens
- Nailed at the center of the board or batten at max 480 centers

JSC-H H3.2 45x45mm treated timber castellated cavity batten

- 10mm gap between battens
- Always slope away from wall
- See JSC structural cavity batten fixing guide

JSC board and batten weatherboard

- coated with approved suitable coating to all 4 sides and ends
- 40-50mm stainless steel clout to hold in place the cavity battens prior to board installation

Flexible or rigid wall underlay to comply with NZBC/E2 Table 23 installed to manufacturers specifications

Framing to NZS 3604 or "fit for purpose"

Note: To be read in conjunction with complete JSC installation instructions • Details may be subject to change without notification

Sectional Detail

JVB-F45-SEC01

Scale: 1:2
Date: 24/02/2025

Email: TechHelp@jsctimber.co.nz

Web: www.jsctimber.co.nz

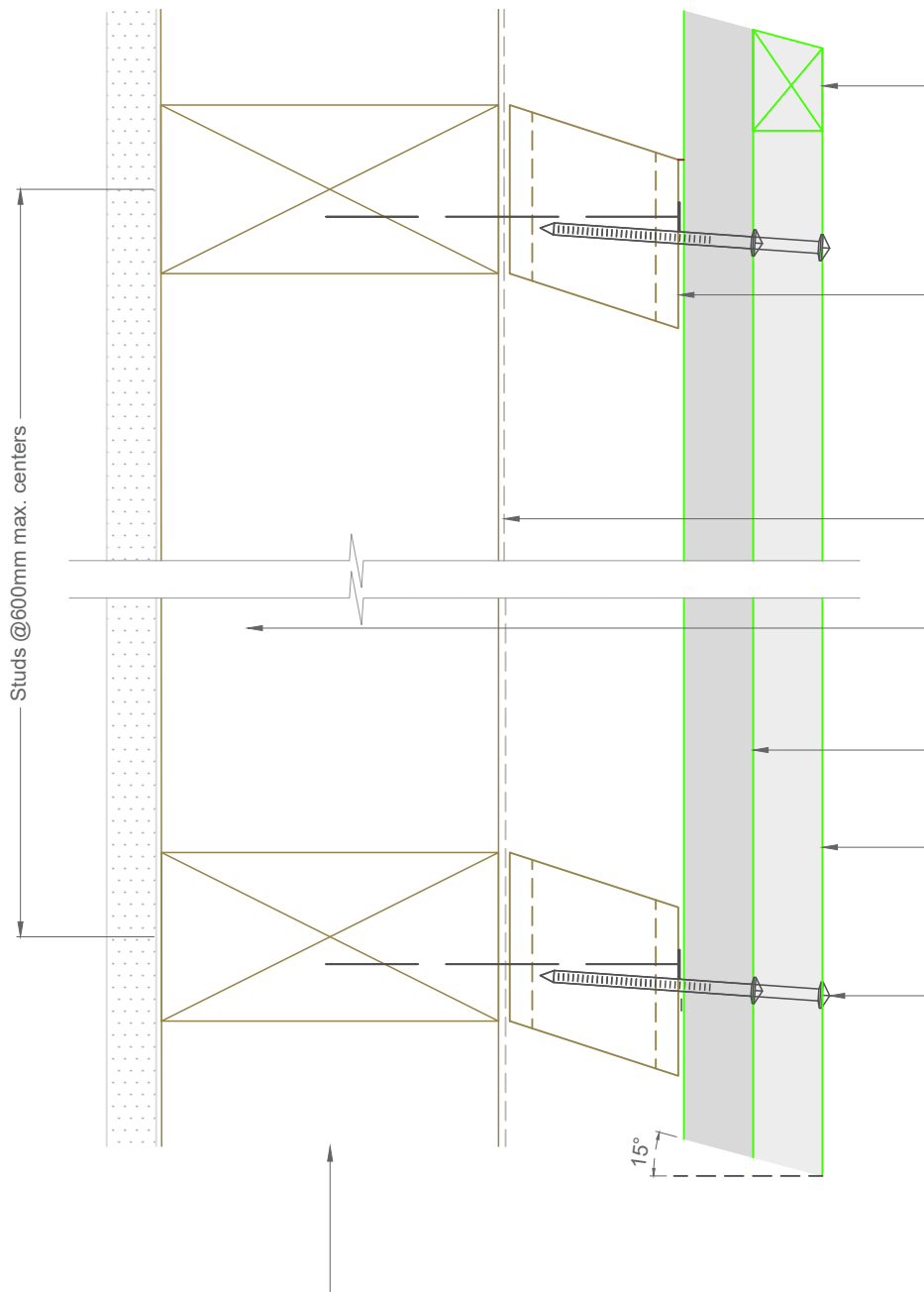
Auckland
20 Sawmill Road
Riverhead
☎ 09 412 2800

Christchurch
23 William Lewis Drive
Sockburn
☎ 03 348 9726

JSC PREMIUM ARCHITECTURAL
& BUILDING SOLUTIONS

Cross Section View

CodeMark CMNZ30083



Batten used horizontally as a filler or packer with a 15° bevel on the top edge sloping away from wall

JSC-H H3.2 45x45mm treated timber castellated cavity batten

- Keep 10mm gap between the cavity battens except at bottom plate
- Cut ends of vertical battens to slope away from wall (10-15°)
- See JSC structural battens fixing guide

Wall underlay to comply with NZBC/E2 Table 23 installed to manufacturers specifications

Interior lining or use rigid wall underlay for unlined walls such as gable ends.
See NZBC/E2 Paragraph 9.1.4

J120 or J121 coated with approved coating on all 4 sides

J123 or J124 coated with approved coating on all 4 sides

Single fix at each nog with annular grooved stainless steel or silicon bronze nails as per NZBC/E2 Table 24

- Pre-drilled 1mm diameter smaller than nail gauge
- Nailed with a 2° upward slope
- 30mm min penetration into framing
- Nailed at the center of the board or batten at max 480mm centers

Framing to NZS 3604 or "fit for purpose"

Note: To be read in conjunction with complete JSC installation instructions • Details may be subject to change without notification

Sectional Detail

JVB-F45-SEC02

Scale: 1:2

Date: 24/02/2025

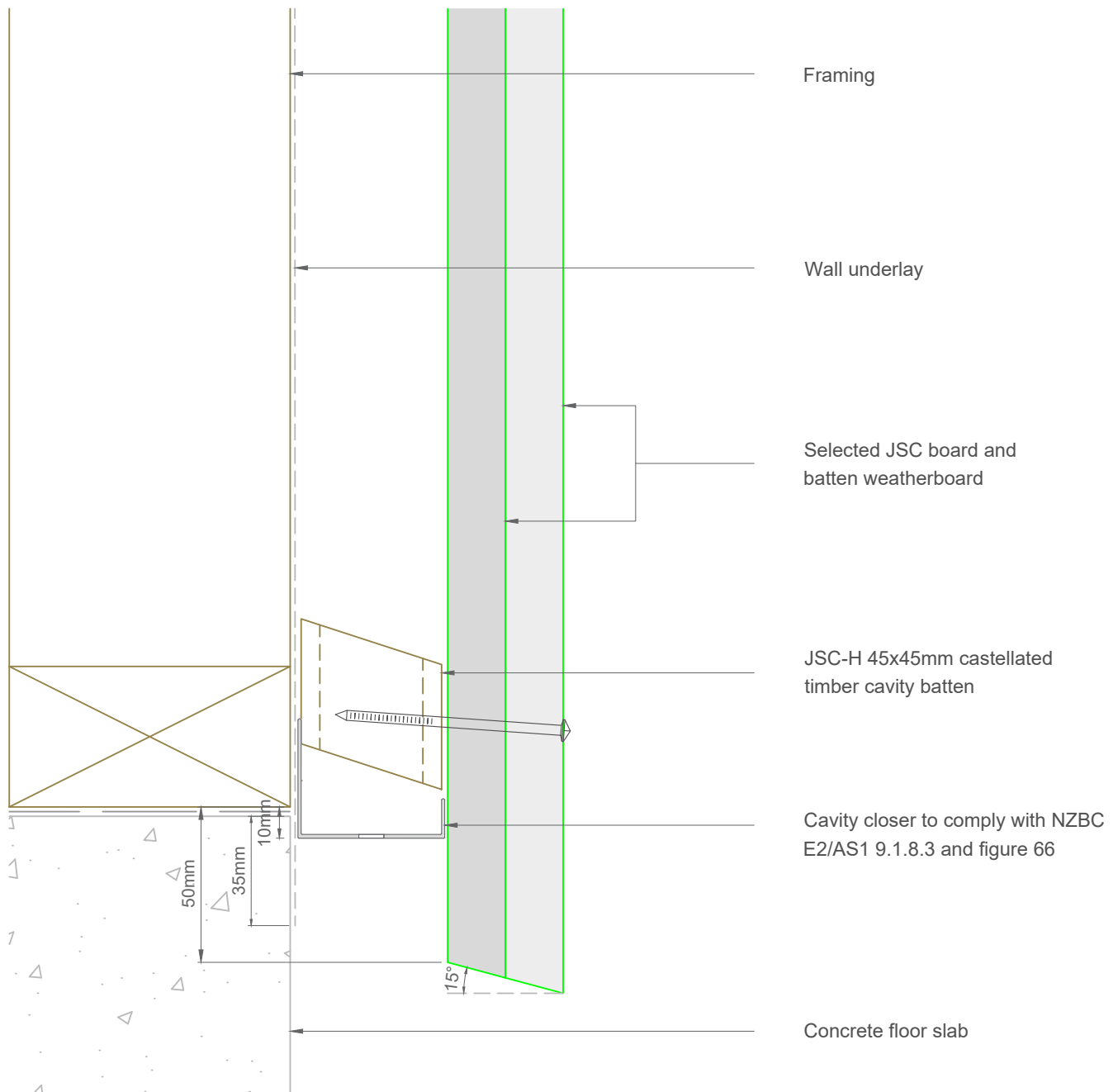
Email: TechHelp@jsctimber.co.nz

Web: www.jsctimber.co.nz

Auckland
20 Sawmill Road
Riverhead
☎ 09 412 2800

Christchurch
23 William Lewis Drive
Sockburn
☎ 03 348 9726

JSC PREMIUM ARCHITECTURAL
& BUILDING SOLUTIONS



Note: To be read in conjunction with complete JSC installation instructions • Details may be subject to change without notification

Bottom Plate Detail

JVB-F45-01

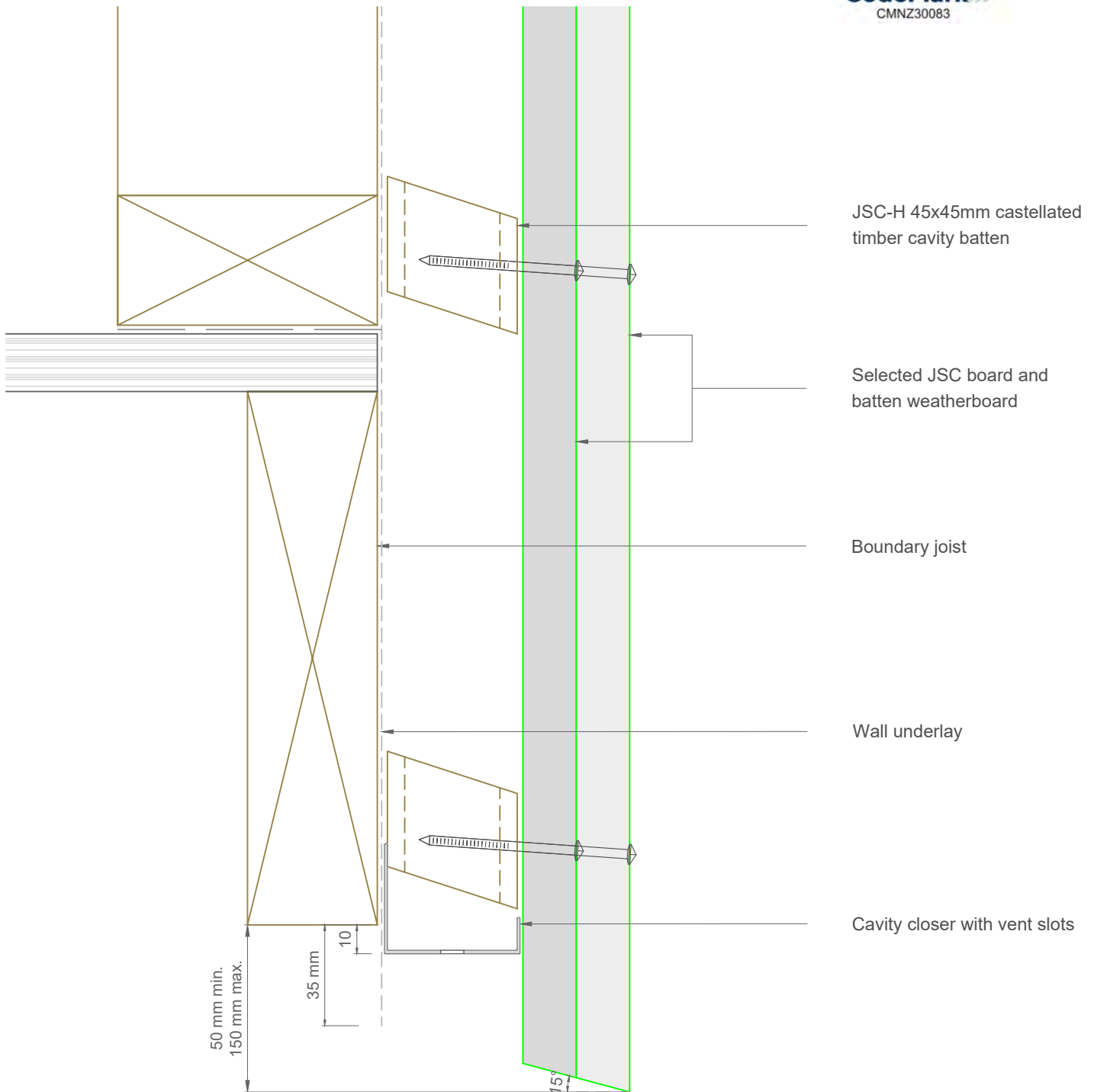
Scale: 1:2
Date: 24/02/2025

Email: TechHelp@jsctimber.co.nz

Web: www.jsctimber.co.nz

Auckland
20 Sawmill Road
Riverhead
☎ 09 412 2800

Christchurch
23 William Lewis Drive
Sockburn
☎ 03 348 9726



Note:- Maintain ground clearance as per NZBC/E2 paragraph 9.1.3.3 and Table 18

Note: To be read in conjunction with complete JSC installation instructions • Details may be subject to change without notification

Bottom Plate on Timber Detail

JVB-F45-01A

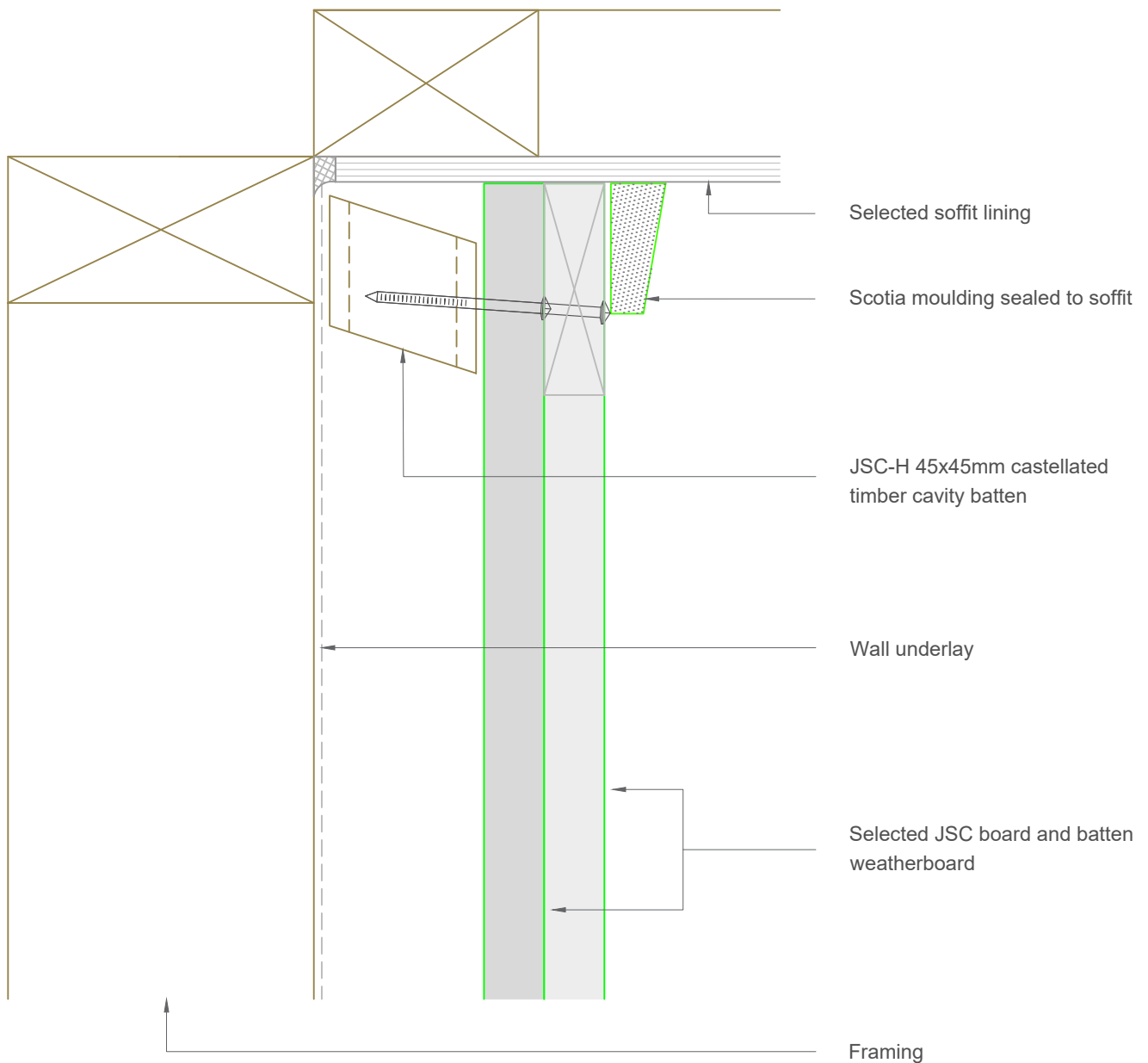
Scale: 1:2
Date: 24/02/2025

Email: TechHelp@jsctimber.co.nz

Web: www.jsctimber.co.nz

Auckland
20 Sawmill Road
Riverhead
☎ 09 412 2800

Christchurch
72 Hammersmith Drive
Wigram
☎ 03 348 9726



Note: To be read in conjunction with complete JSC installation instructions • Details may be subject to change without notification

Top Plate Soffit Detail

JVB-F45-02

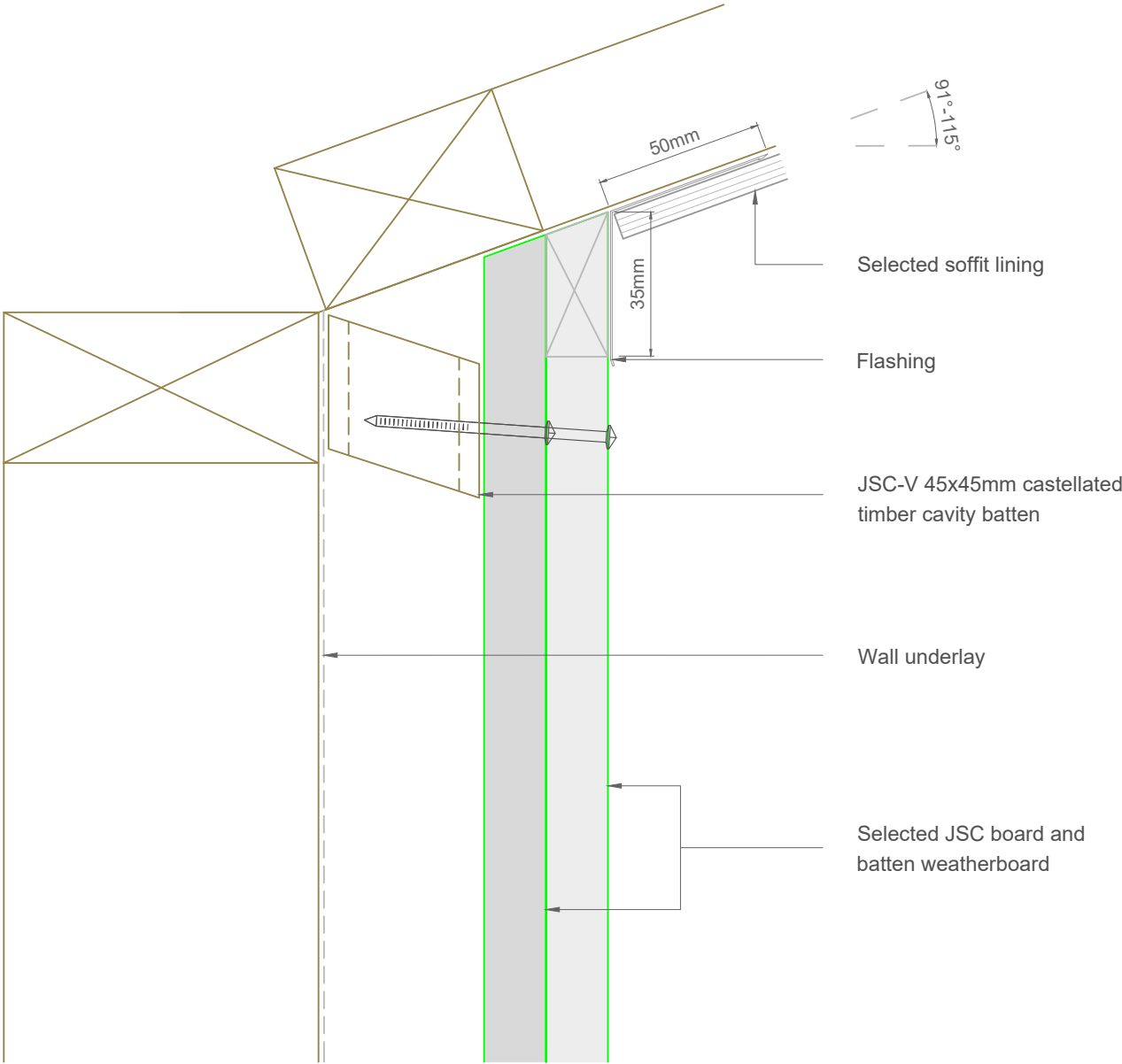
Scale: 1:2
Date: 24/02/2025

Email: TechHelp@jsctimber.co.nz

Web: www.jsctimber.co.nz

Auckland
20 Sawmill Road
Riverhead
☎ 09 412 2800

Christchurch
72 Hammersmith Drive
Wigram
☎ 03 348 9726



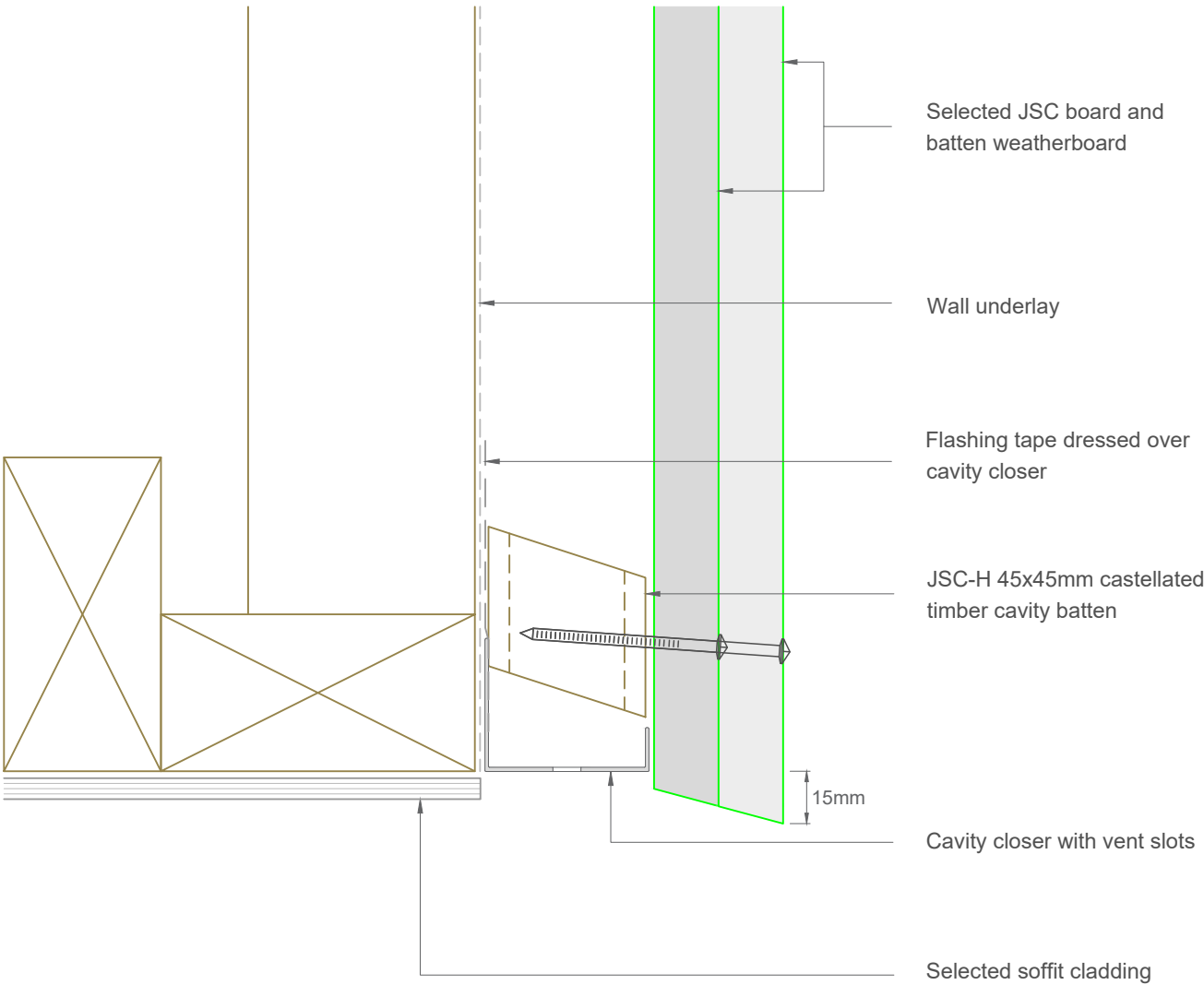
Note: To be read in conjunction with complete JSC installation instructions • Details may be subject to change without notification

| | | |
|-----------------------------|-------------------|--|
| Raking Soffit Detail | JVB-F45-03 | Scale: 1:2 Date: 24/02/2025 |
|-----------------------------|-------------------|--|

Email: TechHelp@jsctimber.co.nz
Web: www.jsctimber.co.nz

Auckland
20 Sawmill Road
Riverhead
☎ 09 412 2800

Christchurch
72 Hammersmith Drive
Wigram
☎ 03 348 9726



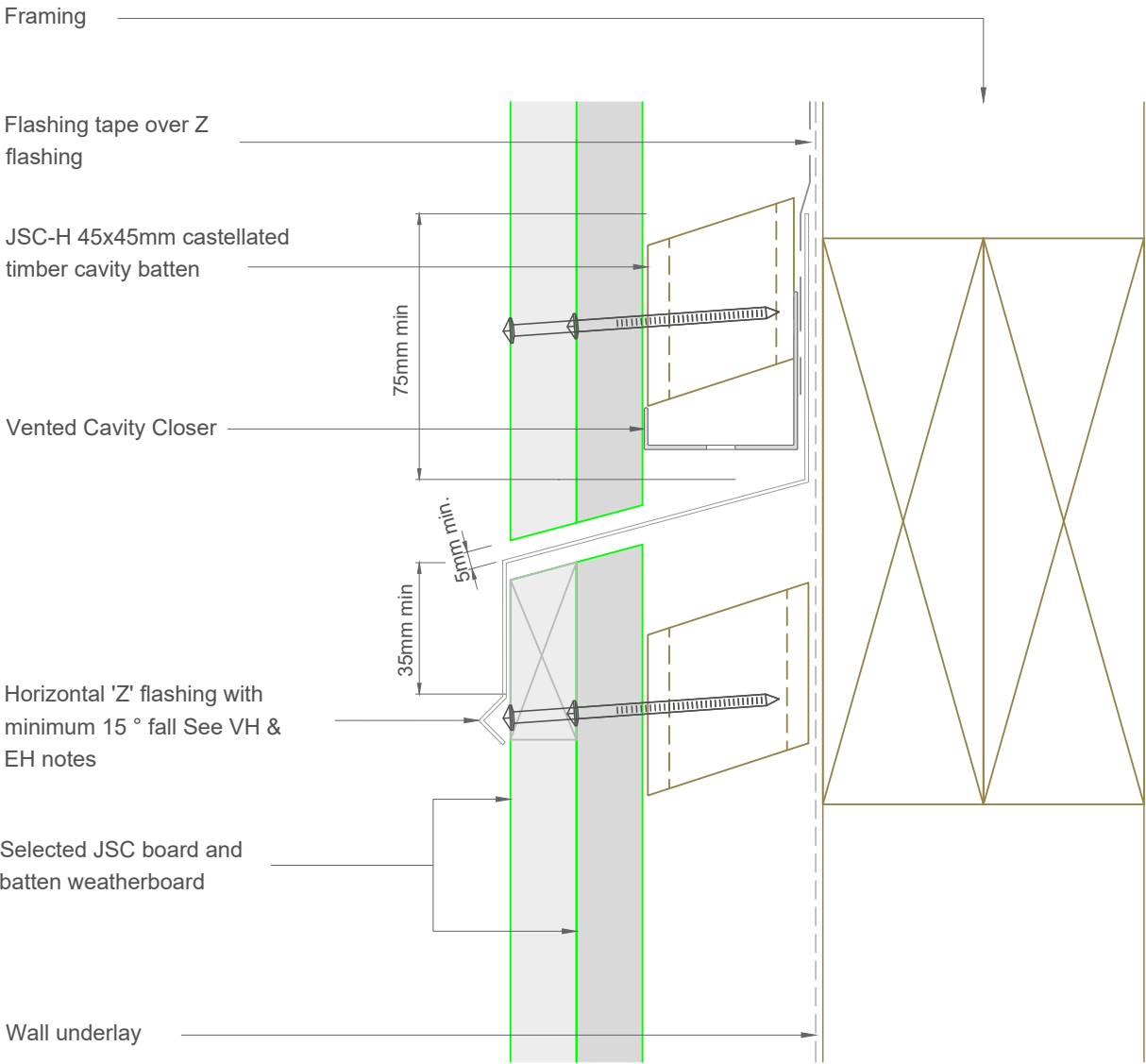
Note: To be read in conjunction with complete JSC installation instructions • Details may be subject to change without notification

| | | |
|-----------------------------------|-------------------|--|
| Bottom Plate Soffit Detail | JVB-F45-04 | Scale: 1:2 Date: 24/02/2025 |
|-----------------------------------|-------------------|--|

Email: TechHelp@jsctimber.co.nz
Web: www.jsctimber.co.nz

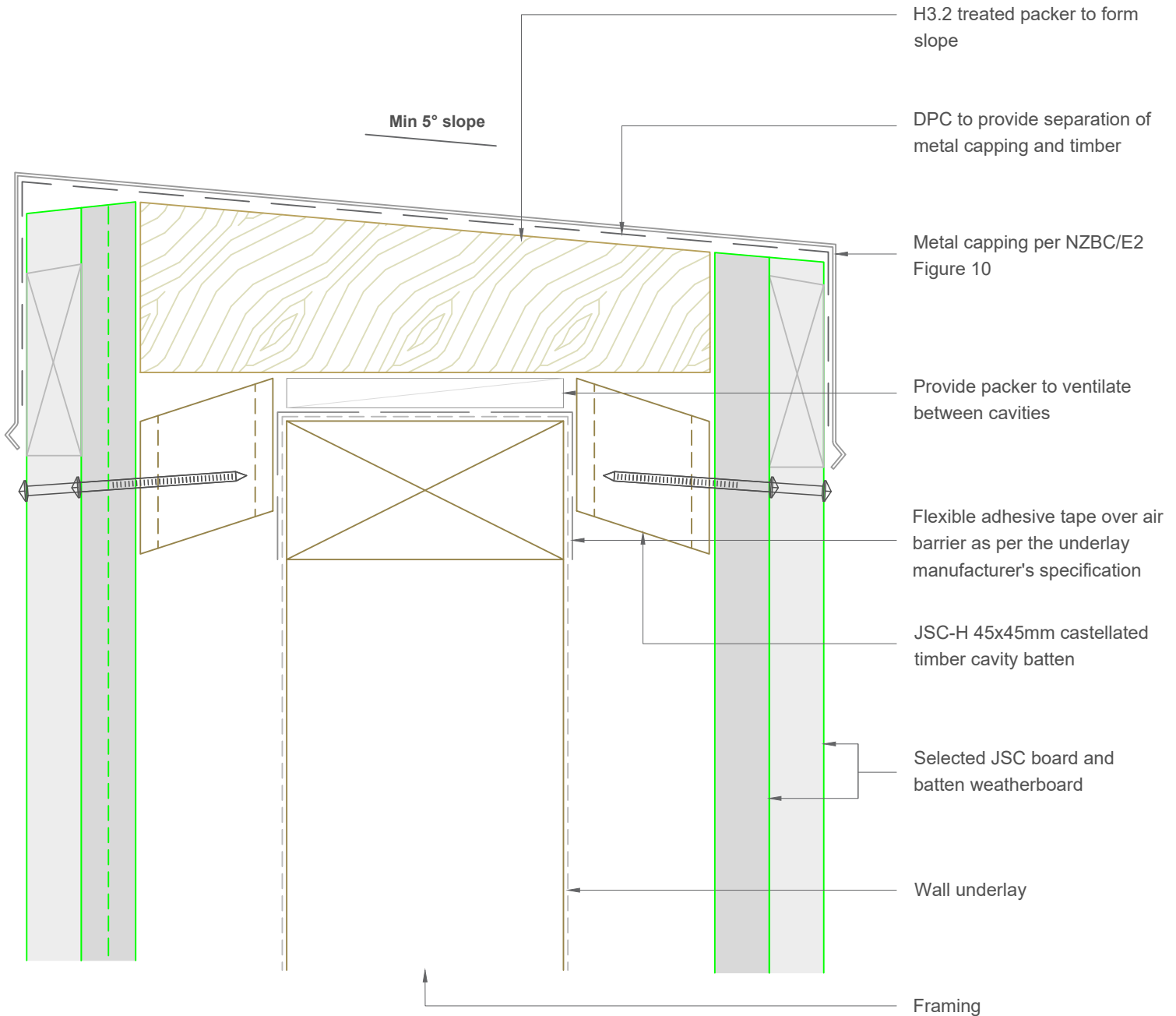
Auckland
20 Sawmill Road
Riverhead
☎ 09 412 2800

Christchurch
72 Hammersmith Drive
Wigram
☎ 03 348 9726



Note: To be read in conjunction with complete JSC installation instructions • Details may be subject to change without notification

| | | |
|-------------------------------------|-------------------|--|
| Inter Storey Junction Detail | JVB-F45-05 | Scale: 1:2 Date: 24/02/2025 |
|-------------------------------------|-------------------|--|



Note:- Parapet Design & installation should comply to NZBC/E2 Section 6

Note: To be read in conjunction with complete JSC installation instructions • Details may be subject to change without notification

Parapet Detail

JVB-F45-06

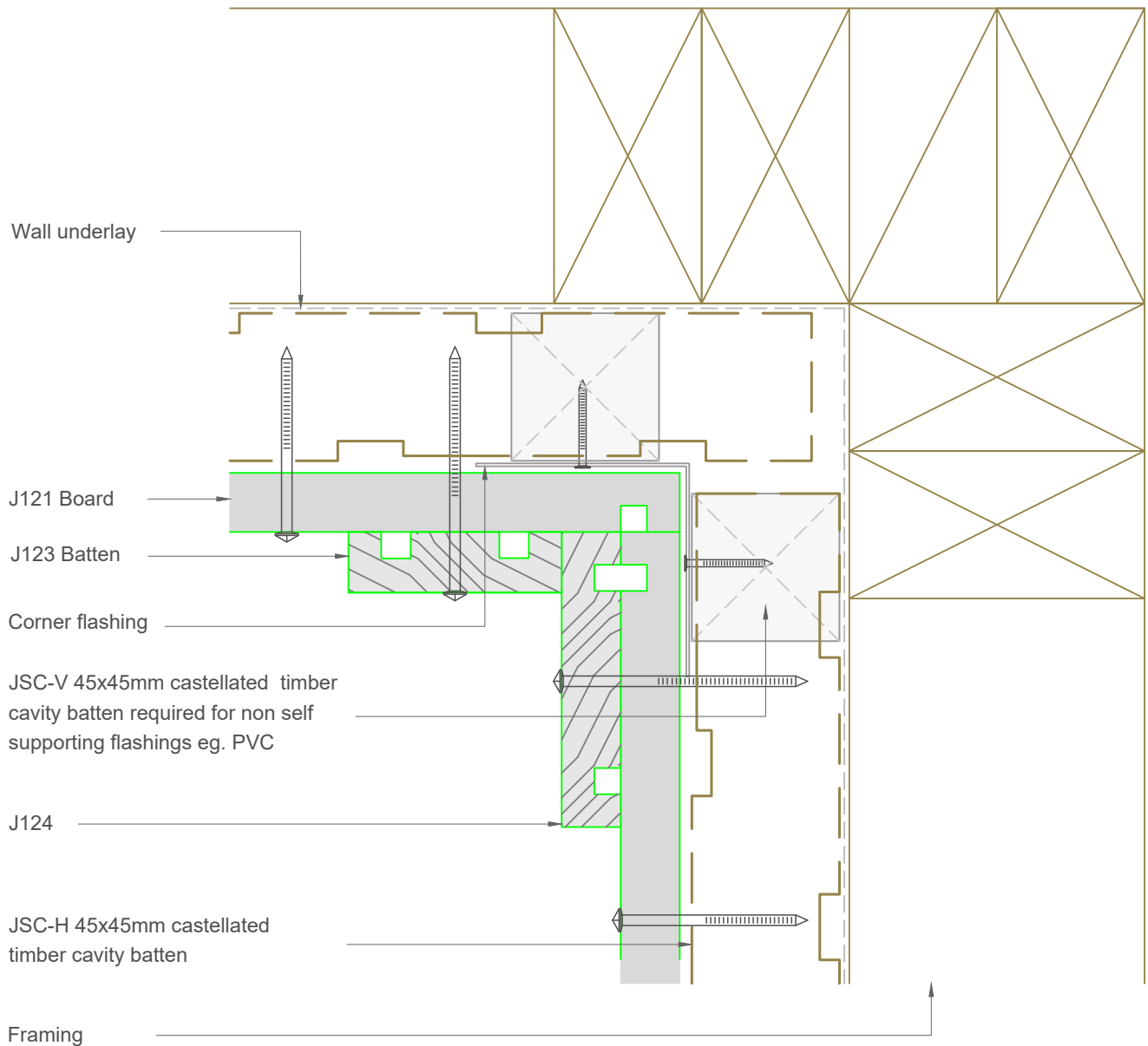
Scale: 1:2
Date: 24/02/2025

Email: TechHelp@jsttimber.co.nz

Web: www.jsttimber.co.nz

Auckland
20 Sawmill Road
Riverhead
☎ 09 412 2800

Christchurch
72 Hammersmith Drive
Wigram
☎ 03 348 9726



Note: To be read in conjunction with complete JSC installation instructions • Details may be subject to change without notification

Internal Corner Detail

JVB-F45-10

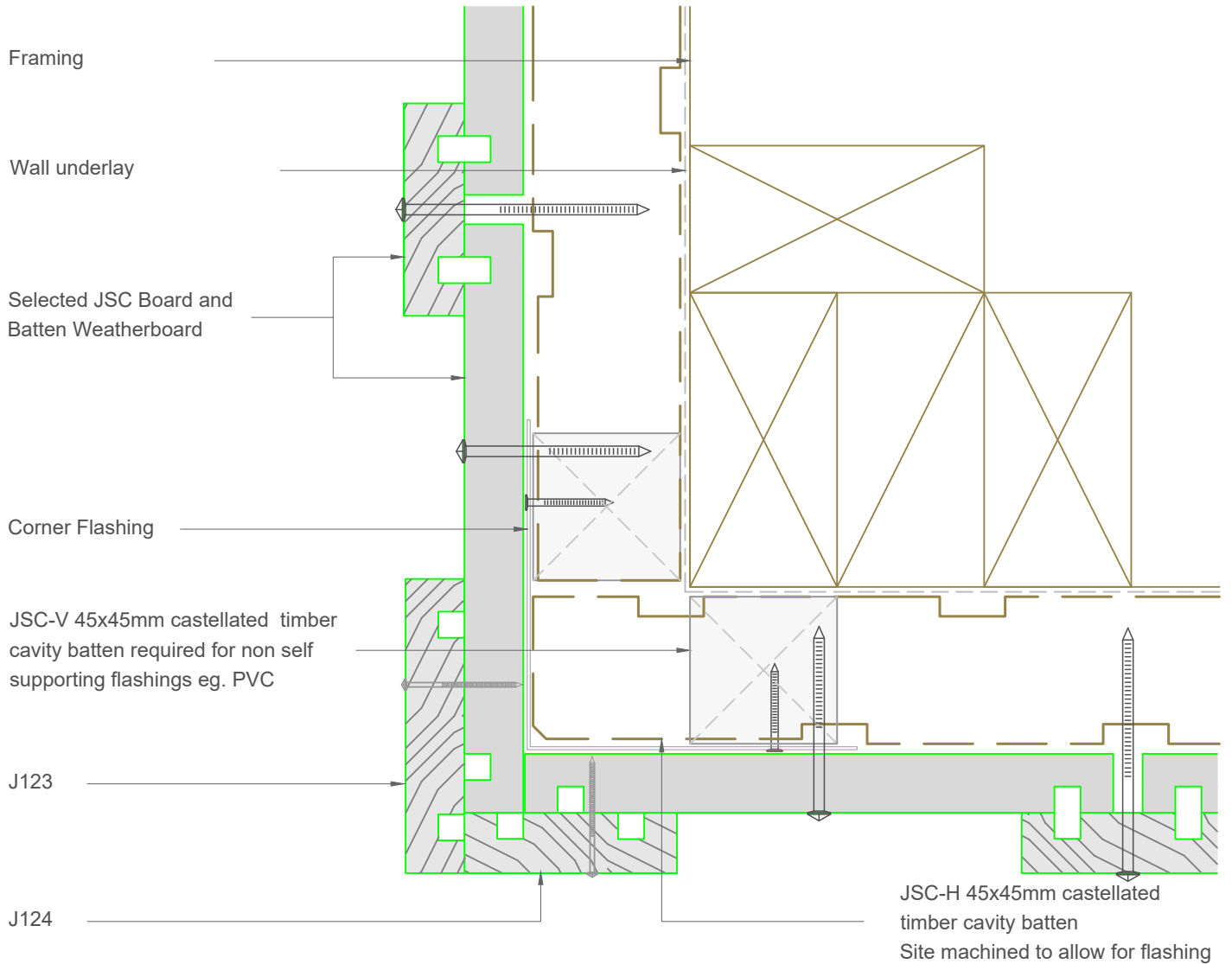
Scale: 1:2
Date: 24/02/2025

Email: TechHelp@jsctimber.co.nz

Web: www.jsctimber.co.nz

Auckland
20 Sawmill Road
Riverhead
☎ 09 412 2800

Christchurch
72 Hammersmith Drive
Wigram
☎ 03 348 9726



Note: To be read in conjunction with complete JSC installation instructions • Details may be subject to change without notification

External Corner Detail

JVB-F45-12

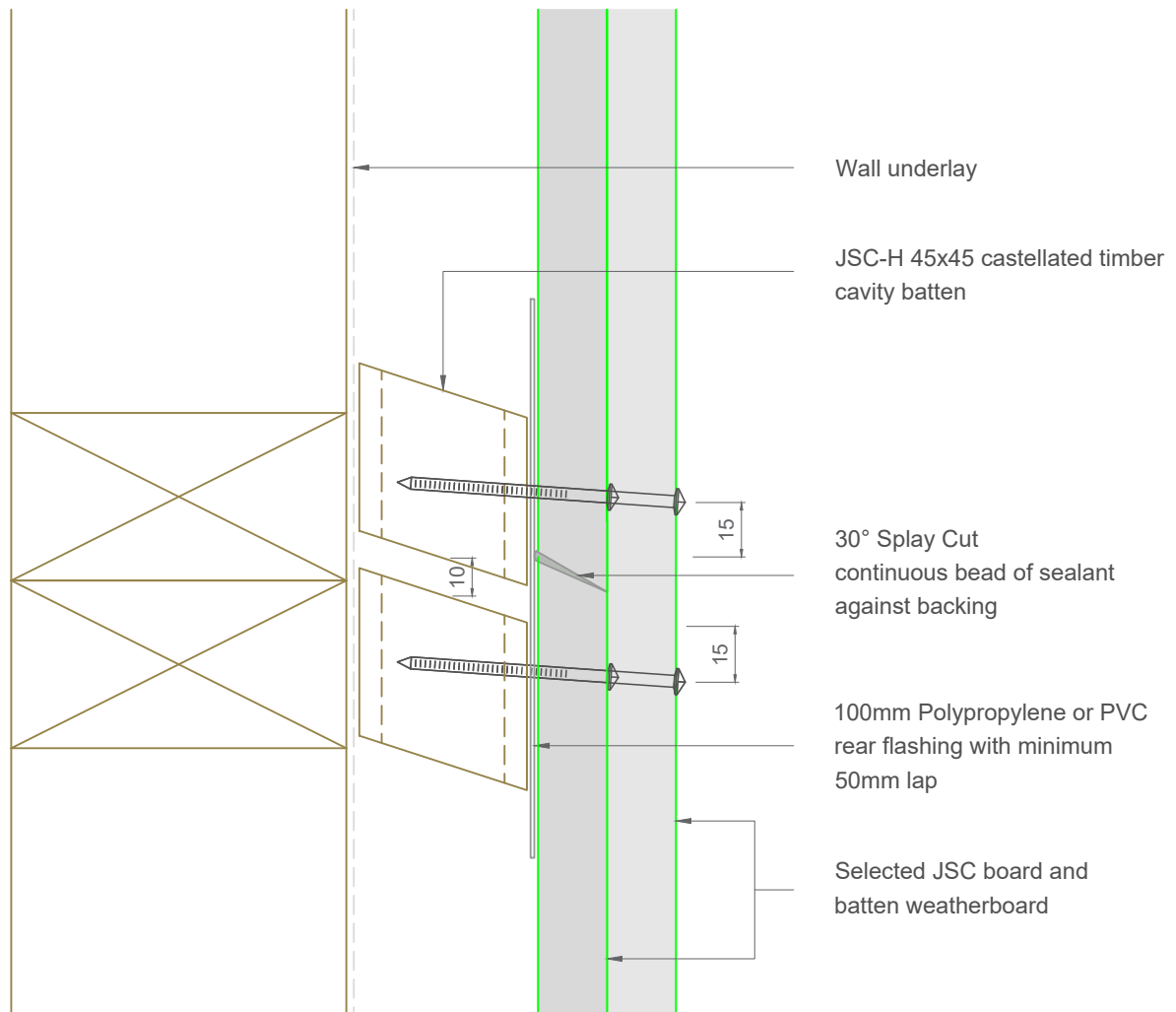
Scale: 1:2
Date: 24/02/2025

Email: TechHelp@jsctimber.co.nz

Web: www.jsctimber.co.nz

Auckland
20 Sawmill Road
Riverhead
☎ 09 412 2800

Christchurch
72 Hammersmith Drive
Wigram
☎ 03 348 9726



Note: To be read in conjunction with complete JSC installation instructions • Details may be subject to change without notification

Scarf Joint Detail

JVB-F45-20

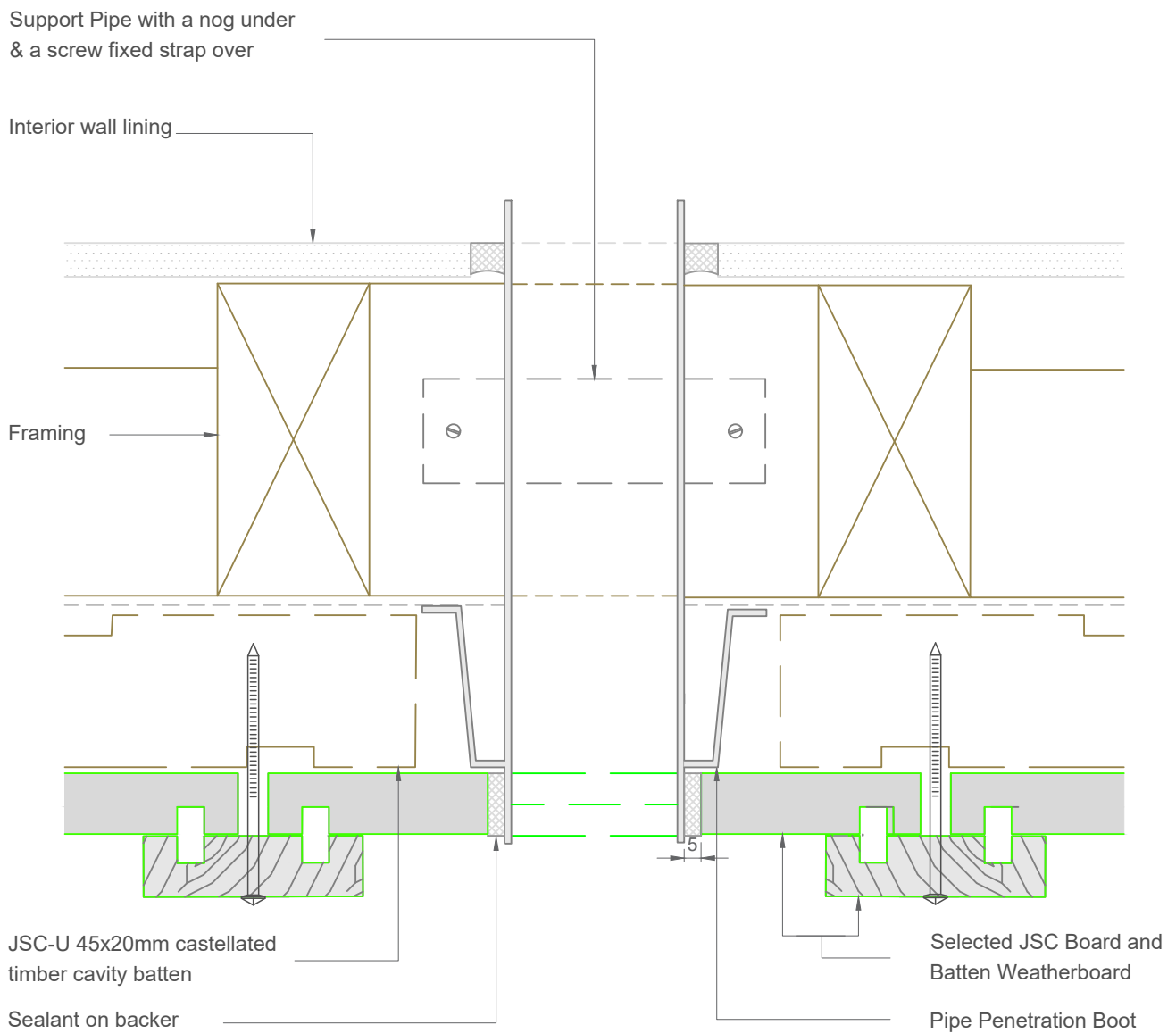
Scale: 1:2
Date: 24/02/2025

Email: TechHelp@jsctimber.co.nz

Web: www.jsctimber.co.nz

Auckland
20 Sawmill Road
Riverhead
☎ 09 412 2800

Christchurch
72 Hammersmith Drive
Wigram
☎ 03 348 9726



Note: To be read in conjunction with complete JSC installation instructions • Details may be subject to change without notification

Pipe Penetration Detail

JVB-F45-21

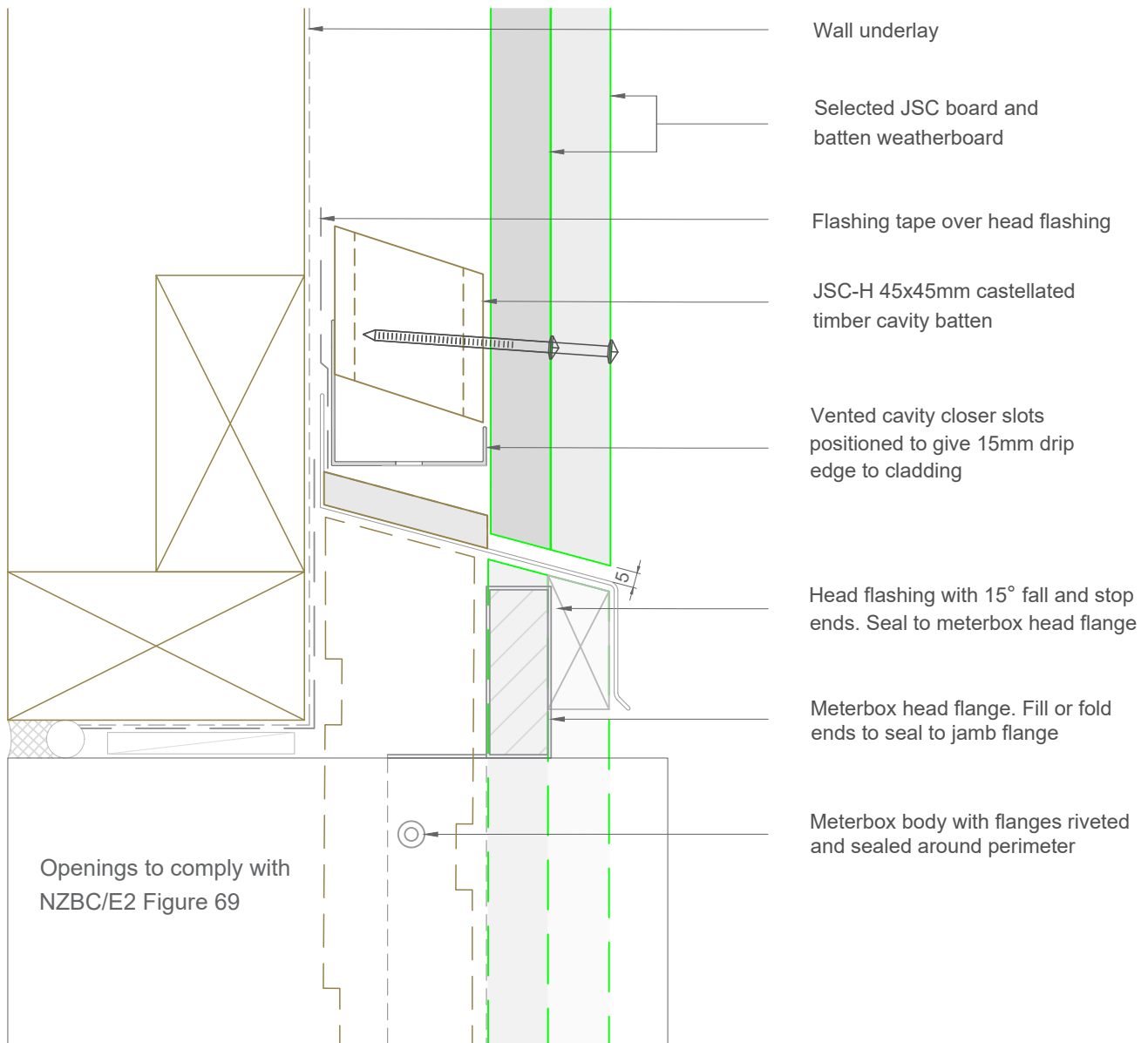
Scale: 1:2
Date: 24/02/2025

Email: TechHelp@jsctimber.co.nz

Web: www.jsctimber.co.nz

Auckland
20 Sawmill Road
Riverhead
☎ 09 412 2800

Christchurch
72 Hammersmith Drive
Wigram
☎ 03 348 9726



Note: To be read in conjunction with complete JSC installation instructions • Details may be subject to change without notification

Meterbox Head Detail

JVB-F45-25

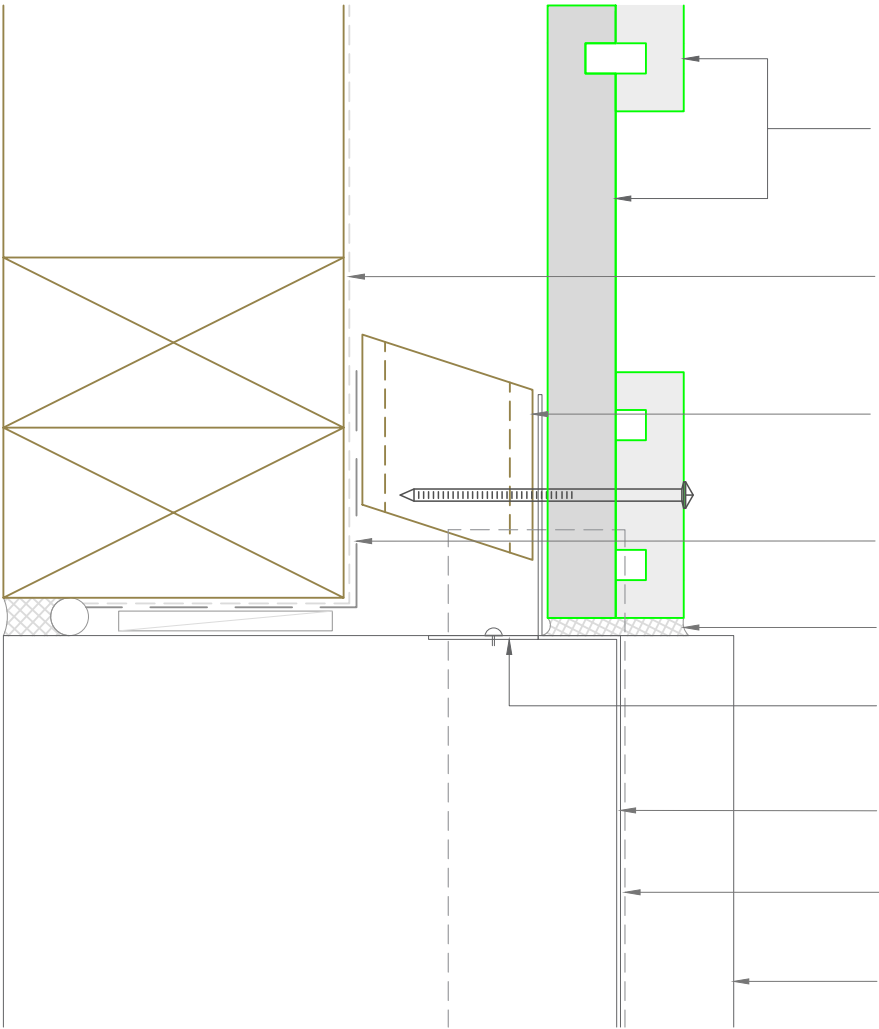
Scale: 1:2
Date: 24/02/2025

Email: TechHelp@jsctimber.co.nz

Web: www.jsctimber.co.nz

Auckland
20 Sawmill Road
Riverhead
☎ 09 412 2800

Christchurch
72 Hammersmith Drive
Wigram
☎ 03 348 9726



Selected JSC Board and
Batten Weatherboard

Wall underlay

JSC-H 45x45mm castellated
timber cavity batten

Flexible flashing tape

Sealant on backer rod

Meterbox jamb flange fixed
and sealed to meterbox

Meterbox head flange (above)

Line of meterbox head
flashing above

Meterbox body

Note: To be read in conjunction with complete JSC installation instructions • Details may be subject to change without notification

Meterbox Jamb Detail

JVB-F45-26

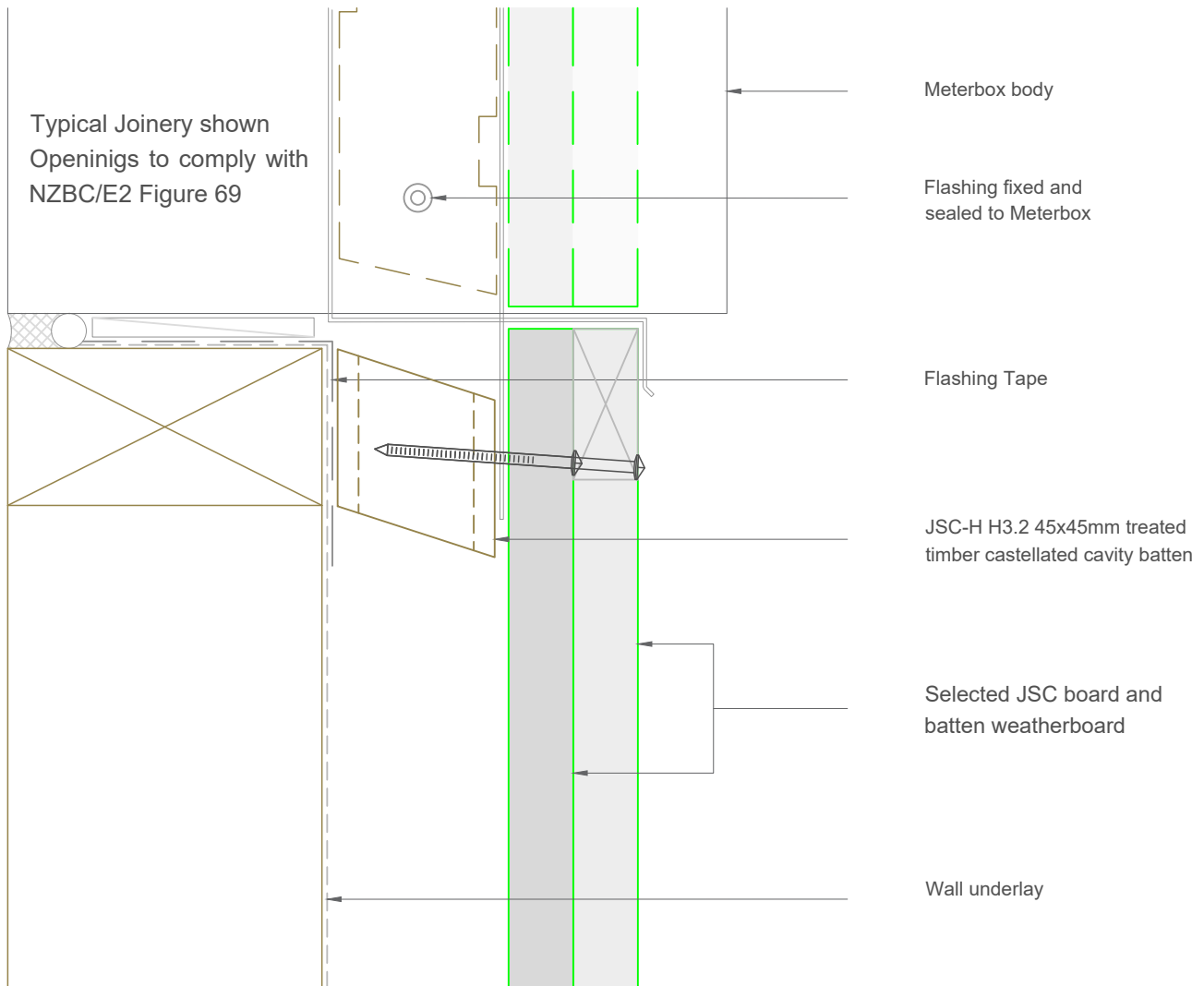
Scale: 1:2
Date: 24/02/2025

Email: TechHelp@jsttimber.co.nz

Web: www.jsttimber.co.nz

Auckland
20 Sawmill Road
Riverhead
☎ 09 412 2800

Christchurch
72 Hammersmith Drive
Wigram
☎ 03 348 9726



Note: To be read in conjunction with complete JSC installation instructions • Details may be subject to change without notification

Meterbox Sill Detail

JVB-F45-27

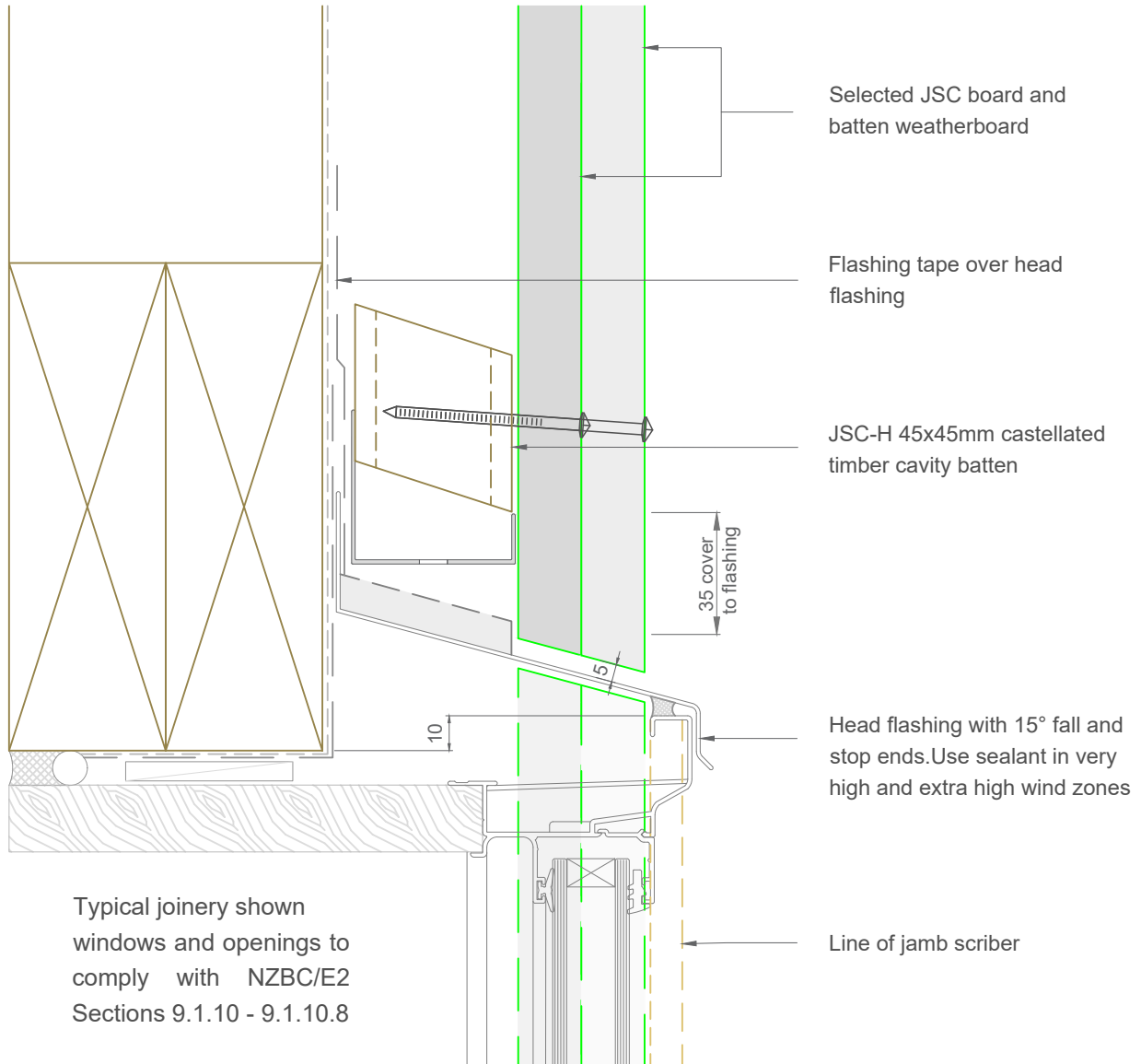
Scale: 1:2
Date: 24/02/2025

Email: TechHelp@jsttimber.co.nz

Web: www.jsttimber.co.nz

Auckland
20 Sawmill Road
Riverhead
☎ 09 412 2800

Christchurch
72 Hammersmith Drive
Wigram
☎ 03 348 9726



Note: To be read in conjunction with complete JSC installation instructions • Details may be subject to change without notification

Window Head Detail

JVB-F45-30

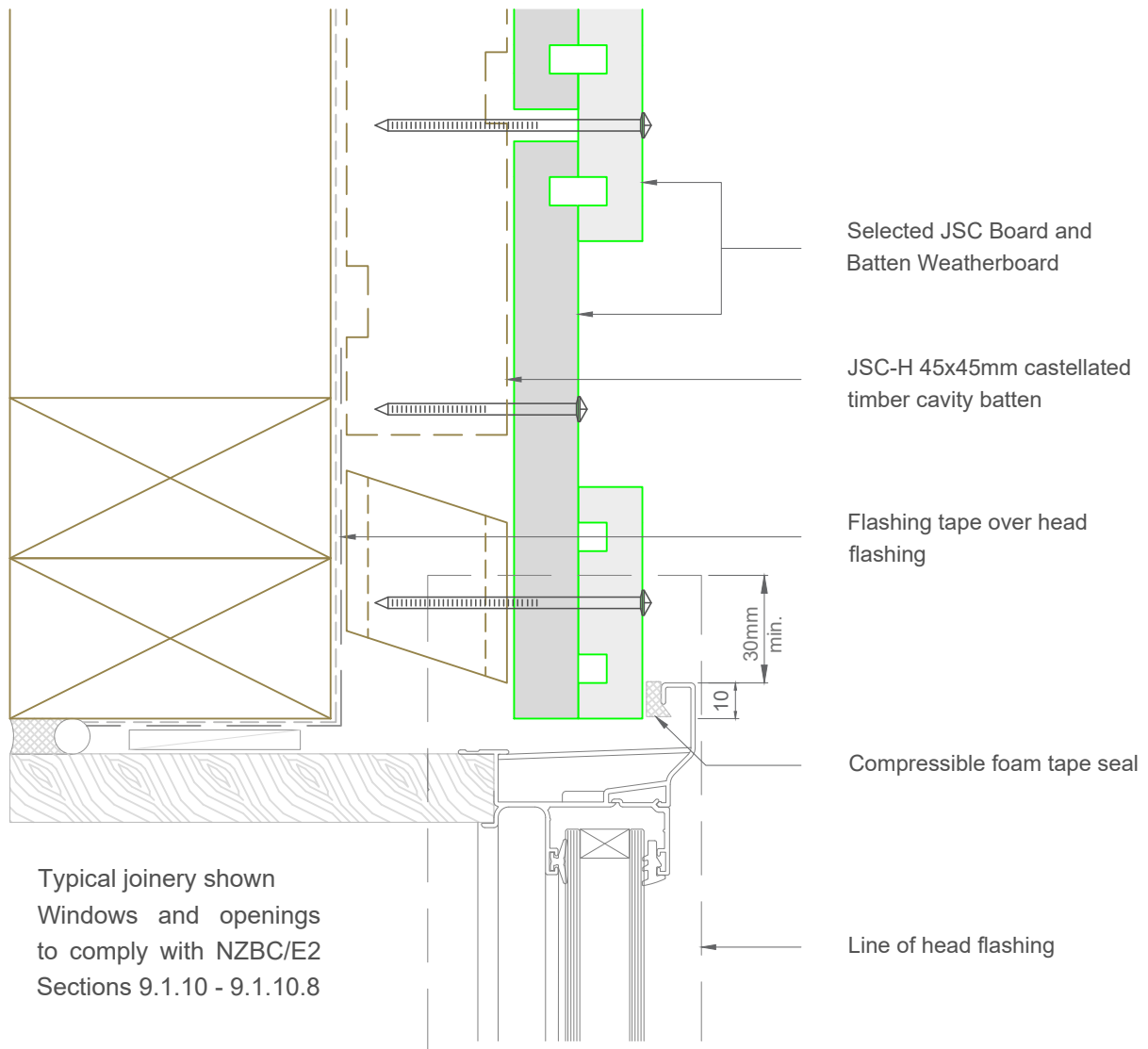
Scale: 1:2
Date: 24/02/2025

Email: TechHelp@jsctimber.co.nz

Web: www.jsctimber.co.nz

Auckland
20 Sawmill Road
Riverhead
☎ 09 412 2800

Christchurch
72 Hammersmith Drive
Wigram
☎ 03 348 9726



Note: To be read in conjunction with complete JSC installation instructions • Details may be subject to change without notification

Window Jamb Detail

JVB-F45-31

Scale: 1:2
Date: 24/02/2025

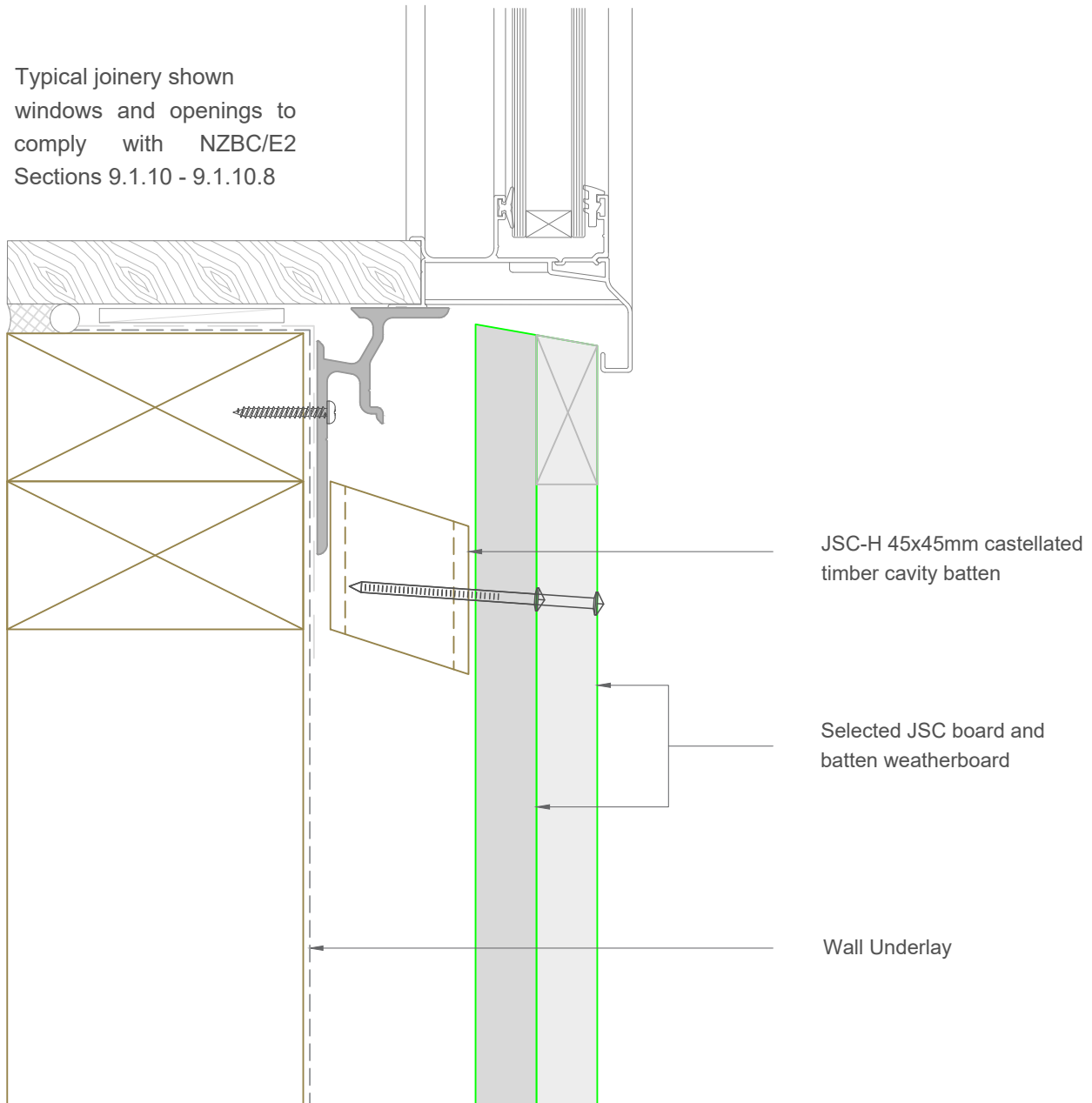
Email: TechHelp@jsctimber.co.nz

Web: www.jsctimber.co.nz

Auckland
20 Sawmill Road
Riverhead
☎ 09 412 2800

Christchurch
72 Hammersmith Drive
Wigram
☎ 03 348 9726

Typical joinery shown
windows and openings to
comply with NZBC/E2
Sections 9.1.10 - 9.1.10.8



Note: To be read in conjunction with complete JSC installation instructions • Details may be subject to change without notification

Window Sill Detail

JVB-F45-33

Scale: 1:2
Date: 24/02/2025

Email: TechHelp@jsctimber.co.nz

Web: www.jsctimber.co.nz

Auckland
20 Sawmill Road
Riverhead
☎ 09 412 2800

Christchurch
72 Hammersmith Drive
Wigram
☎ 03 348 9726